



Mulberry Court, BL6 6DX £895 PCM

A MODERN, SPACIOUS first floor, two bedroom apartment located in a popular location with great transport links to the surrounding areas and Bolton Town Centre.

The property has neutral decoration throughout with neutral carpets. The property comprises; entrance, stairs, landing, open plan kitchen lounge, a three-piece bathroom suite with a shower over the bath, and two bedrooms.

Externally there is allocated parking. The apartment benefits from uPVC double glazing and is warmed by gas central heating.

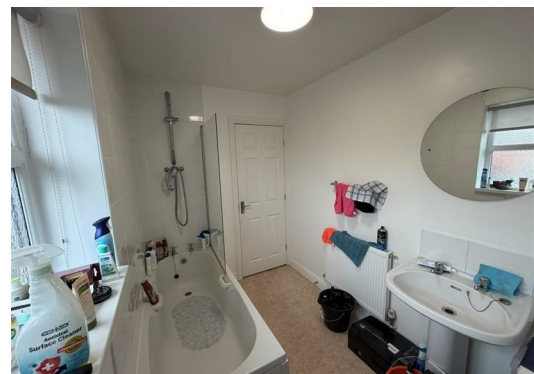


Disclaimer:

These particulars, whilst believed to be accurate are set out as a general guideline and do not constitute any part of an offer or contract. Intending Tenants should not rely on them as statements of representation of fact, but must satisfy themselves by inspection or otherwise as to their accuracy. Please note that we have not tested any apparatus, equipment, fixtures, fittings or services including gas central heating and so cannot verify they are in working order. Although we try to ensure accuracy, if measurements are used in this listing, they may be approximate. Therefore if intending Tenants need accurate measurements to order carpeting or to ensure existing furniture will fit, they should take such measurements themselves. Photographs are reproduced general information and it must not be inferred that any item is included for let with the property. Please contact 01706 823 131 for further details.

Viewing:

Viewing strictly by appointment through Lifestyle Sales and Lettings.



Energy Efficiency Rating		Current	Potential
Very energy efficient - lower running costs			
(92-100) A			
(81-91) B			
(69-80) C		76	76
(54-68) D			
(39-53) E			
(21-38) F			
(1-20) G			
Not energy efficient - higher running costs			
England & Wales		EU Directive 2002/91/EC	

Environmental Impact (CO ₂) Rating		Current	Potential
Very environmentally friendly - lower CO ₂ emissions			
(92-100) A			
(81-91) B			
(69-80) C		76	76
(54-68) D			
(39-53) E			
(21-38) F			
(1-20) G			
Not environmentally friendly - higher CO ₂ emissions			
England & Wales		EU Directive 2002/91/EC	



Head Office: 121 Whalley Road, Ramsbottom, Lancashire, BL0 0DG

Telephone: 01706823131 **Email:** enquiries@lifestylesalesandlettings.co.uk **Website:** www.lifestylesalesandlettings.co.uk